

Atomic
Engineering
Ltd.

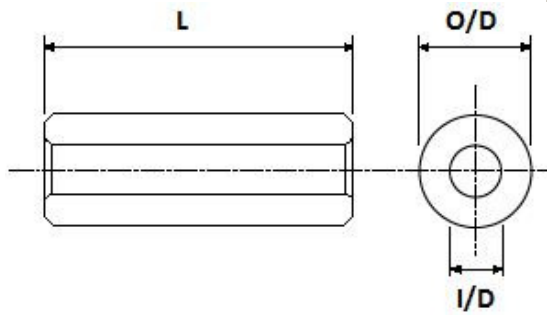


PRODUCT CATALOGUE

CONTENTS

Page 3	Brass Nickel Plated Clearance Spacers
Page 4	Brass Nickel Plated Threaded Spacers
Page 5	Brass Nickel Plated Stand-Off Pillars – Female/Female
Page 6	Brass Nickel Plated Stand-Off Pillars – Male-Female
Page7	Steel Zinc Plated Clearance Spacers
Page 8	Steel Zinc Plated Threaded Spacers
Page 9	Steel Zinc Plated Stand-Off Pillars – Female/Female
Page 10	Steel Zinc Plated Stand-Off Pillars – Male/Female
Page 11	Screwlocks (Sub-D Connectors)
Page 12	Nylon Insulating Pillars
Page 13	Nylon Clearance Spacers
Page 14	Nylon Clearance Spacers (Continued)
Page 15	Small Brass Earth Bars
Page 16	Large Brass Earth Bars
Page 17	Earth & Neutral Terminal Bar
Page 18	Double Pole Earth Blocks
Page 19	Copper Bus Bar
Page 20	Copper Earth & Neutral Links
Page 21	Copper Earth & Neutral Links (Continued)
Page 22	Non Rotating Terminals (NRT, Stock Blocks)

BRASS CLEARANCE SPACERS



Clearance For Thread	O/D	I/D
M2.5	5.0	2.7
M3	6.0	3.2
M4	8.0	4.3

PRODUCT INFORMATION

- Material: Brass (CZ121)
- Finish: Bright Nickel Plate
- Minimum Order: 300 Pieces
- Free samples available on request

- Listed below are our standard lengths. However, please enquire about any non standard requirements you may have

ALL MEASUREMENTS IN MILLIMETRES

PRODUCT TABLE

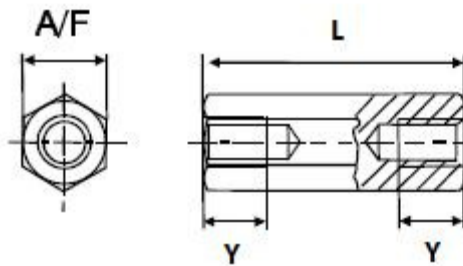
SAMPLE CODE: BCS-L10-D6-32

BCS = Brass Clearance Spacer **L** = Length **D6** = 6.0 O/D **32** = 3.2 I/D

OTHER SIZES AND MATERIALS AVAILABLE ON REQUEST

Clearance For Thread	Product Code	Body Length (L) (Replace ** in code with required body length)
M2.5	BCS-L**-D5-27	1, 2, 3, 4, 5, 6, 7, 8, 10, 12, 13, 16, 18, 20, 25
M3	BCS-L**-D6-32	1, 2, 3, 4, 5, 6, 7, 8, 9, 10, 11, 12, 13, 14, 16, 18, 20, 25
M4	BCS-L**-D8-43	1, 2, 3, 4, 5, 6, 8, 10, 12, 16, 18, 20, 25

BRASS THREADED SPACERS



Thread	A/F	Hole Depth (y)
M2	4.0	Through
M2.5	5.0	Through
M3	5.0	Through
M4	7.0	Through
M5	8.0	Through

PRODUCT INFORMATION

- Material: Brass (CZ121)
- Finish: Bright Nickel Plate
- Minimum Order: 100 Pieces
- Free samples available on request

- Listed below are our standard lengths. However, please enquire about any non standard requirements you may have

ALL MEASUREMENTS IN MILLIMETRES

PRODUCT TABLE

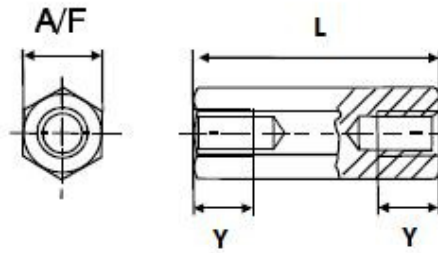
SAMPLE CODE: BTS-L14-AF5-3

BTS = Brass Threaded Spacer **L** = Length **AF5** = 5.0 A/F **3** = Thread Size M3

OTHER SIZES AND MATERIALS AVAILABLE ON REQUEST

Thread	Product Code	A/F	Body Length (L) (Replace ** in code with required body length)
M2	BTS-L**-AF4-2	4.0	3, 4, 5, 6, 7, 8, 9, 10, 12, 15, 17, 18
M2.5	BTS-L**-AF5-2.5	5.0	3, 4, 5, 6, 7, 8, 9, 10, 11, 12, 13, 14, 15, 16, 18
M3	BTS-L**-AF5-3	5.0	3, 4, 5, 6, 7, 8, 9, 10, 11, 12, 13, 14, 15, 16, 18
M4	BTS-L**-AF7-4	7.0	3, 4, 5, 6, 7, 8, 9, 10, 11, 12, 14, 15, 16, 17, 18
M5	BTS-L**-AF8-5	8.0	5, 8, 10, 12, 15, 18

BRASS STAND-OFF PILLARS - FEMALE



Thread	A/F	Hole Depth (y)
M2	4.0	10.0
M2.5	5.0	10.0
M3	5.0	10.0
M4	7.0	10.0
M5	8.0	11.0
M6	10.0	12.0

PRODUCT INFORMATION

- Material: Brass (CZ121)
- Finish: Bright Nickel Plate
- Minimum Order: 100 Pieces
- Free samples available on request

- Listed below are our standard lengths. However, please enquire about any non standard requirements you may have

ALL MEASUREMENTS IN MILLIMETRES

PRODUCT TABLE

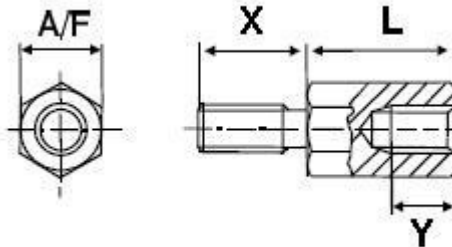
SAMPLE CODE: BS-L25-TB-M3

BS = Brass Stand-Off **L** = Length **TB** = Female **M3** = Thread Size

OTHER SIZES AND MATERIALS AVAILABLE ON REQUEST

Thread	Product Code	A/F	Body Length (L) (Replace ** in code with required body length)
M2	BS-L**-TB-M2	4.0	20, 25, 30, 35, 40, 45
M2.5	BS-L**-TB-M2.5	5.0	20, 22, 24, 25, 30, 35, 40, 45
M3	BS-L**-TB-M3	5.0	20, 22, 24, 25, 30, 32, 35, 40, 45, 50
M4	BS-L**-TB-M4	7.0	20, 22, 24, 25, 30, 35, 40, 45, 50
M5	BS-L**-TB-M5	8.0	20, 25, 30, 35, 40, 45, 50, 55, 60, 70, 80
M6	BS-L**-TB-M6	10.0	25, 30, 35, 40, 45, 50

BRASS STAND-OFF PILLARS - MALE/FEMALE



Thread	Stud Length (X)	Hole Depth (Y)
M2	6.0	2.5 - 5.0
M2.5	6.0	4.0 - 6.0
M3	8.0	3.0 - 10.0
M4	8.0	3.0 - 10.0
M5	10.0	4.0 - 11.0
M6	12.0	5.0 - 12.0

PRODUCT INFORMATION

- Material: Brass (CZ121)
- Finish: Bright Nickel Plate
- Minimum Order: 100 Pieces
- Free samples available on request

- Listed below are our standard lengths. However, please enquire about any non standard requirements you may have

ALL MEASUREMENTS IN MILLIMETRES

PRODUCT TABLE

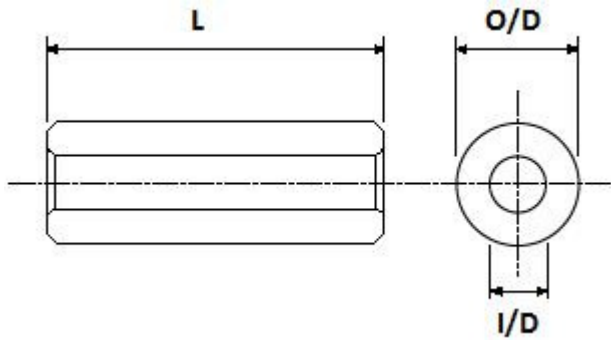
SAMPLE CODE: BS-L15-TA-M3

BS = Brass Stand-Off L = Length TA = Male/Female M3 = Thread Size

OTHER SIZES AND MATERIALS AVAILABLE ON REQUEST

Thread	Product Code	A/F	Body Length (L) (Replace ** in code with required body length)
M2	BS-L**-TA-M2	4.0	5, 6, 8, 10, 12, 15, 18, 20, 25, 30
M2.5	BS-L**-TA-M2.5	5.0	5, 6, 8, 10, 12, 15, 18, 20, 25, 30
M3	BS-L**-TA-M3	5.0	4, 5, 6, 7, 8, 9, 10, 12, 14, 15, 16, 18, 20, 22, 25, 28, 30, 35, 40
M4	BS-L**-TA-M4	7.0	5, 8, 9, 10, 11, 12, 14, 15, 16, 18, 20, 25, 30, 35, 40, 50
M5	BS-L**-TA-M5	8.0	5, 8, 10, 12, 15, 18, 20, 25, 30, 35, 40, 45, 50, 55, 60, 70, 80
M6	BS-L**-TA-M6	10.0	20, 25, 30, 35, 40, 45, 50

STEEL CLEARANCE SPACERS



Clearance For Thread	O/D	I/D
M3	6.0	3.2
M4	8.0	4.3
M5	10.0	5.3
M6	10.0	6.3

PRODUCT INFORMATION

- ☐ Material: Mild Steel (S300Pb)
- ☐ Finish: Zinc Plate
- ☐ Minimum Order: 500 Pieces
- ☐ Free samples available on request

- ☐ Listed below are our standard lengths. However, please enquire about any non standard requirements you may have

ALL MEASUREMENTS IN MILLIMETRES

PRODUCT TABLE

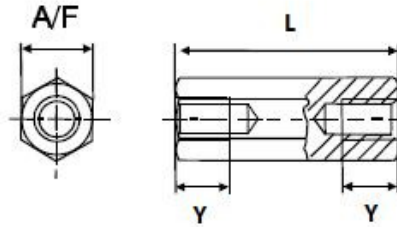
SAMPLE CODE: SCS-L10-D6-32

SCS = Steel Clearance Spacer **L** = Length **D6** = 6.0 O/D **32** = 3.2 I/D

OTHER SIZES AND MATERIALS AVAILABLE ON REQUEST

Clearance For Thread	Product Code	Body Length (L) (Replace ** in code with required body length)
M3	SCS-L**-D6-32	1, 2, 3, 4, 5, 6, 7, 8, 9, 10, 11, 12, 13, 14, 15, 16, 17, 18, 19, 20, 25, 30, 35, 40
M4	SCS-L**-D8-43	1, 2, 3, 4, 5, 6, 7, 8, 9, 10, 11, 12, 13, 14, 15, 16, 17, 18, 19, 20, 25, 30, 35, 40

STEEL THREADED SPACERS



Thread	A/F	Hole Depth (y)
M2.5	5.0	Through
M3	5.0	Through
M4	7.0	Through
M5	8.0	Through
M6	10.0	Through
M8	13.0	Through

PRODUCT INFORMATION

- **Material: Mild Steel (S300Pb)**
- **Finish: Zinc Plate**
- **Minimum Order: 100 Pieces**
- **Free samples available on request**

- **Listed below are our standard lengths. However, please enquire about any non standard requirements you may have**

ALL MEASUREMENTS IN MILLIMETRES

PRODUCT TABLE

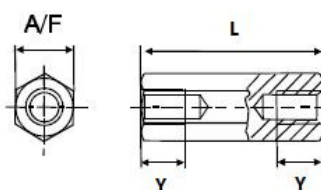
SAMPLE CODE: STS-L14-AF5-3

STS = Steel Threaded Spacer **L** = Length **AF5** = 5.0 A/F **3** = Thread Size M3

OTHER SIZES AND MATERIALS AVAILABLE ON REQUEST

Thread	Product Code	A/F	Body Length (L) (Replace ** in code with required body length)
M2.5	STS-L**-AF5-2.5	5.0	5, 6, 7, 8, 9, 10, 11, 12, 13, 14, 15, 16, 17, 18, 19
M3	STS-L**-AF5-3	5.0	5, 6, 7, 8, 9, 10, 11, 12, 13, 14, 15, 16, 17, 18, 19
M4	STS-L**-AF7-4	7.0	5, 6, 7, 8, 9, 10, 11, 12, 13, 14, 15, 16, 17, 18, 19
M5	STS-L**-AF8-5	8.0	5, 6, 7, 8, 9, 10, 11, 12, 13, 14, 15, 16, 17, 18, 19
M6	STS-L**-AF10-6	10.0	10, 12, 15, 18
M8	STS-L**-AF13-8	13.0	15, 18

STEEL STAND-OFF PILLARS - FEMALE



Thread	A/F	Hole Depth (y)
M2.5	5.0	10.0
M3	5.0	10.0
M4	7.0	10.0
M5	8.0	10.0
M6	10.0	13.0
M8	13.0	15.0

PRODUCT INFORMATION

- **Material: Mild Steel (S300Pb)**
- **Finish: Zinc Plate**
- **Minimum Order: 100 Pieces**
- **Free samples available on request**

- **Listed below are our standard lengths. However, please enquire about any non standard requirements you may have**

ALL MEASUREMENTS IN MILLIMETRES

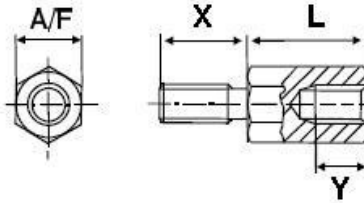
SAMPLE CODE: SS-L25-TB-M3

SS = Steel Stand-Off **L** = Length **TB** = Female **M3** = Thread Size

OTHER SIZES AND MATERIALS AVAILABLE ON REQUEST

Thread	Product Code	A/F	Body Length (L) (Replace ** in code with required body length)
M2.5	BS-L**-TB-M2.5	5.0	20, 25, 30, 35, 40, 45
M3	BS-L**-TB-M3	5.0	20, 25, 30, 35, 40, 45, 50, 55, 60, 70, 80
M4	BS-L**-TB-M4	7.0	20, 25, 30, 35, 40, 45, 50, 55, 60, 70, 80
M5	BS-L**-TB-M5	8.0	20, 25, 30, 35, 40, 45, 50, 55, 60, 70, 80
M6	BS-L**-TB-M6	10.0	20, 25, 30, 35, 40, 45, 50, 55, 60, 70, 80
M8	BS-L**-TB-M8	13.0	20, 25, 30, 35, 40, 45, 50, 60, 70, 80, 90, 100

STEEL STAND-OFF PILLARS - MALE/FEMALE



Thread	Stud Length (X)	Hole Depth (Y)
M3	8.0 - 10.0	3.0 - 10.0
M4	8.0 - 10.0	2.5 - 10.0
M5	8.0 - 10.0	2.5 - 10.0
M6	12.0	6.0 - 13.0
M8	14.0	8.0 - 15.0

PRODUCT INFORMATION

- Material: Mild Steel (S300Pb)
- Finish: Zinc Plate
- Minimum Order: 100 Pieces
- Free samples available on request

- Listed below are our standard lengths. However, please enquire about any non standard requirements you may have

ALL MEASUREMENTS IN MILLIMETRES

PRODUCT TABLE

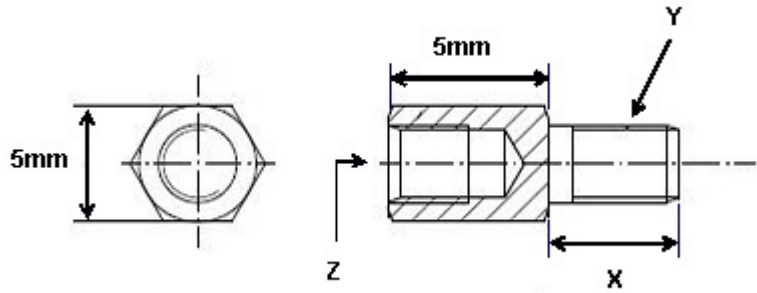
SAMPLE CODE: SS-L15-TA-M3

SS = Steel Stand-Off **L** = Length **TA** = Male/Female **M3** = Thread Size

OTHER SIZES AND MATERIALS AVAILABLE ON REQUEST

Thread	Product Code	A/F	Body Length (L) (Replace ** in code with required body length)
M3	SS-L**-TA-M3	5.0	5, 6, 7, 8, 9, 10, 11, 12, 13, 14, 15, 16, 17, 18, 19, 20, 25, 30, 35, 40, 45,
M4	SS-L**-TA-M4	7.0	5, 6, 7, 8, 9, 10, 11, 12, 13, 14, 15, 16, 17, 18, 19, 20, 25, 30, 35, 40, 45,
M5	SS-L**-TA-M5	8.0	5, 6, 7, 8, 9, 10, 11, 12, 13, 14, 15, 16, 17, 18, 19, 20, 25, 30, 35, 40, 45,
M6	SS-L**-TA-M6	10.0	10, 12, 15, 18, 20, 25, 30, 35, 40, 45, 50, 55, 60, 70, 80
M8	SS-L**-TA-M8	13.0	15, 18, 20, 25, 30, 35, 40, 45, 50, 55, 60, 70, 80, 90, 100

SCREWLOCKS (SUB-D CONNECTORS)



PRODUCT INFORMATION

* **Material:** Brass or Mild Steel

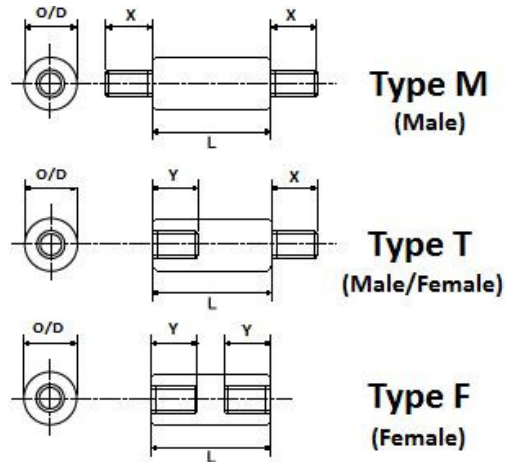
* **Finish:** Nickel or Zinc Plate

* **Minimum Order:** 500 Pieces

Listed below are our standard lengths. However, please enquire about any non standard requirements you may have.

X	Y	Z	Product Code (Brass Nickel)	Product Code (Steel Zinc)
6mm	M3	M3	SLK-BN-M3-M3-6	SLK-SZ-M3-M3-6
6mm	4-40 UNC	M3	SLK-BN-440-M3-6	SLK-SZ-440-M3-6
6mm	M3	4-40 UNC	SLK-BN-M3-440-6	SLK-SZ-M3-440-6
6mm	4-40 UNC	4-40 UNC	SLK-BN-440-440-6	SLK-SZ-440-440-6
8mm	M3	M3	SLK-BN-M3-M3-8	SLK-SZ-M3-M3-8
8mm	4-40 UNC	M3	SLK-BN-440-M3-8	SLK-SZ-440-M3-8
8mm	M3	4-40 UNC	SLK-BN-M3-440-8	SLK-SZ-M3-440-8
8mm	4-40 UNC	4-40 UNC	SLK-BN-440-440-8	SLK-SZ-440-440-8
12mm	M3	M3	SLK-BN-M3-M3-12	SLK-SZ-M3-M3-12
12mm	4-40 UNC	M3	SLK-BN-440-M3-12	SLK-SZ-440-M3-12
12mm	M3	4-40 UNC	SLK-BN-M3-440-12	SLK-SZ-M3-440-12
12mm	4-40 UNC	4-40 UNC	SLK-BN-440-440-12	SLK-SZ-440-440-12

NYLON INSULATING PILLARS



PRODUCT INFORMATION

- ☐ Material: Nylon 66
- ☐ Inserts: Brass (CZ121) Self Colour
- ☐ Flammability Rating: UL94-V2
- ☐ Operating Temperature: -30°C to +80°C
- ☐ Minimum Order: 100 Pieces
- ☐ Free samples available on request

- ☐ We have a vast range of standard nylon pillars. However, we can manufacture specials, at very competitive prices, to meet your requirements.

ALL MEASUREMENTS IN MILLIMETRES

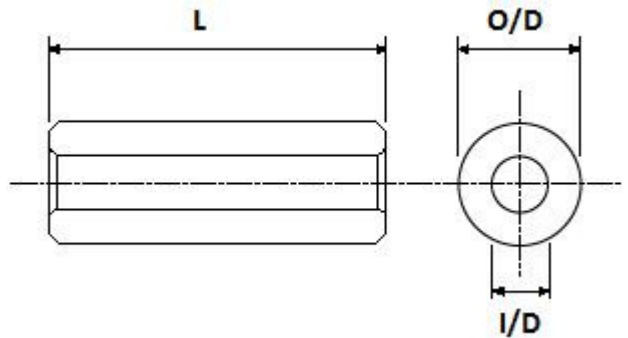
SAMPLE CODE: IP-L20-D8.0-TT-M3

IP = Insulating Pillar L = Length D = Body O/D TT = Male/Female M3 = Thread Size

OTHER COMBINATIONS OF BODY O/D, STUD LENGTHS ETC. ARE AVAILABLE ON REQUEST

Thread	Minimum Body Length	Standard O/D	Body Length	Standard Stud Length (X) & Depth (Y)
M2.5	13.0	8.0	13.0 - 100.0	6.0
M3	13.0	8.0	13.0 - 100.0	6.0
M3.5	13.0	8.0	13.0 - 100.0	6.0
M4	13.0	8.0	13.0 - 100.0	6.0
M5	19.0	9.5	19.0 - 100.0	10.0
M6	22.0	12.7	22.0 - 100.0	12.0
M8	25.0	15.9	25.0 - 100.0	14.0
M8	25.0	19.0	25.0 - 100.0	14.0
M10	40.0	25.0	40.0 - 100.0	20.0

NYLON CLEARANCE SPACERS



PRODUCT INFORMATION

- Material: Nylon 6
- Operating Temperature: -30°C to +80°C
- Minimum Order: 300 Pieces
- Free samples available on request

- Listed below are our standard lengths. However, please enquire about any non standard requirements you may have

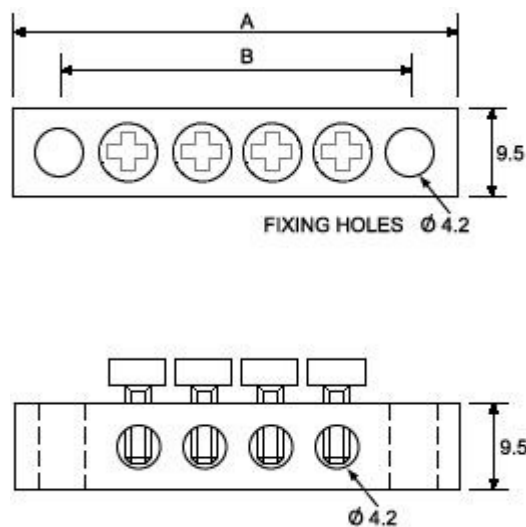
SAMPLE CODE: CS-L15-D8-43

CS = Clearance Spacer **L** = Length **D8** = 8.0 O/D **43** = 4.3 I/D

Clearance	Product Code	Body Length (L) (Replace ** in code with required body length)
M2.5	CS-L**-D4-26	2, 3, 4, 5, 6, 7, 8, 9, 10, 11, 12, 13, 14, 15, 16, 17, 18, 19, 20, 21, 22, 23, 24, 25, 26, 27, 28, 29, 30
M3	CS-L**-D5-32	2, 3, 4, 5, 6, 7, 8, 9, 10, 11, 12, 13, 14, 15, 16, 17, 18, 19, 20, 21, 22, 23, 24, 25, 26, 27, 28, 29, 30
M3	CS-L**-D6-32	2, 3, 4, 5, 6, 7, 8, 9, 10, 11, 12, 13, 14, 15, 16, 17, 18, 19, 20, 21, 22, 23, 24, 25, 26, 27, 28, 29, 30
M3	CS-L**-D8-32	2, 3, 4, 5, 6, 7, 8, 9, 10, 11, 12, 13, 14, 15, 16, 17, 18, 19, 20, 21, 22, 23, 24, 25, 26, 27, 28, 29, 30
M3.5	CS-L**-D6-36	2, 3, 4, 5, 6, 7, 8, 9, 10, 11, 12, 13, 14, 15, 16, 17, 18, 19, 20, 21, 22, 23, 24, 25, 26, 27, 28, 29, 30
M4	CS-L**-D8-43	2, 3, 4, 5, 6, 7, 8, 9, 10, 11, 12, 13, 14, 15, 16, 17, 18, 19, 20, 21, 22, 23, 24, 25, 26, 27, 28, 29, 30
M4	CS-L**-D10-43	2, 3, 4, 5, 6, 7, 8, 9, 10, 11, 12, 13, 14, 15, 16, 17, 18, 19, 20, 21, 22, 23, 24, 25, 26, 27, 28, 29, 30
M4	CS-L**-D12-43	2, 3, 4, 5, 6, 7, 8, 9, 10, 11, 12, 13, 14, 15, 16, 17, 18, 19, 20, 21, 22, 23, 24, 25, 26, 27, 28, 29, 30
M5	CS-L**-D8-52	2, 3, 4, 5, 6, 7, 8, 9, 10, 11, 12, 13, 14, 15, 16, 17, 18, 19, 20, 21, 22, 23, 24, 25, 26, 27, 28, 29, 30
M5	CS-L**-D10-52	2, 3, 4, 5, 6, 7, 8, 9, 10, 11, 12, 13, 14, 15, 16, 17, 18, 19, 20, 21, 22, 23, 24, 25, 26, 27, 28, 29, 30

M5	CS-L**-D12-52	2, 3, 4, 5, 6, 7, 8, 9, 10, 11, 12, 13, 14, 15, 16, 17, 18, 19, 20, 21, 22, 23, 24, 25, 26, 27, 28, 29, 30
M6	CS-L**-D10-62	2, 3, 4, 5, 6, 7, 8, 9, 10, 11, 12, 13, 14, 15, 16, 17, 18, 19, 20, 21, 22, 23, 24, 25, 26, 27, 28, 29, 30
M6	CS-L**-D12-62	2, 3, 4, 5, 6, 7, 8, 9, 10, 11, 12, 13, 14, 15, 16, 17, 18, 19, 20, 21, 22, 23, 24, 25, 26, 27, 28, 29, 30
M8	CS-L**-D12-82	2, 3, 4, 5, 6, 7, 8, 9, 10, 11, 12, 13, 14, 15, 16, 17, 18, 19, 20, 21, 22, 23, 24, 25, 26, 27, 28, 29, 30
M8	CS-L**-D15-84	2, 3, 4, 5, 6, 7, 8, 9, 10, 11, 12, 13, 14, 15, 16, 17, 18, 19, 20, 21, 22, 23, 24, 25, 26, 27, 28, 29, 30
M8	CS-L**-D16-84	2, 3, 4, 5, 6, 7, 8, 9, 10, 11, 12, 13, 14, 15, 16, 17, 18, 19, 20, 21, 22, 23, 24, 25, 26, 27, 28, 29, 30
M8	CS-L**-D17-84	2, 3, 4, 5, 6, 7, 8, 9, 10, 11, 12, 13, 14, 15, 16, 17, 18, 19, 20, 21, 22, 23, 24, 25, 26, 27, 28, 29, 30
M8	CS-L**-D20-84	2, 3, 4, 5, 6, 7, 8, 9, 10, 11, 12, 13, 14, 15, 16, 17, 18, 19, 20, 21, 22, 23, 24, 25, 26, 27, 28, 29, 30

SINGLE POLE EARTHING BARS (SMALL)



PRODUCT INFORMATION

- Material: Brass (CuZn39Pb3)
- Finish: Self Colour
- Screws: Steel Multi-Head

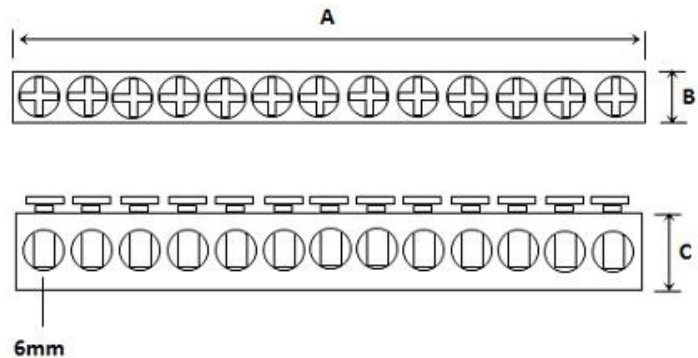
- Listed below are our standard bars. However, please enquire about any non standard requirements you may have

ALL MEASUREMENTS IN MILLIMETRES

PRODUCT TABLE

Product Code	No. Of Ways	Measurement (A)	Measurement (B)
AT001	4	44.0	34.0
AT002	6	56.0	46.0
AT003	8	68.0	58.0
AT004	10	80.0	70.0

SINGLE POLE EARTHING BAR (LARGE)



PRODUCT INFORMATION

- **Material:** Brass (CuZn39Pb3)
- **Finish:** Self Colour
- **Screws:** Steel Multi-Head

- Listed below are our standard lengths. However, please enquire about any non standard earthing bars you may require.

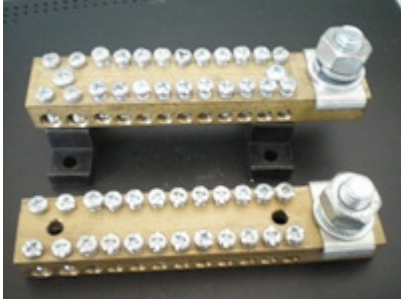
ALL MEASUREMENTS IN MILLIMETRES

PRODUCT TABLE

OTHER SIZES AVAILABLE ON REQUEST

Product Code	No. of Ways	M4 Fix Hole Position	Dimension A	Dimension B	Dimension C
AT007	20 + 2 Fix	3 & 19	176.0	8.0	11.0
AT008	26 + 2 Fix	3 & 20	224.0	8.0	11.0
AT009	38 + 3 Fix	3, 21 & 38	326.0	8.0	11.0
AT010	50 + 3 Fix	3, 27 & 51	420.0	8.0	11.0
AT011	Multiple	N/A	1800.0	8.0	11.0

EARTH AND NEUTRAL TERMINAL BARS



MAXIMUM RATING	250 Amps.
MAIN STUD TERMINAL	Capacity M10

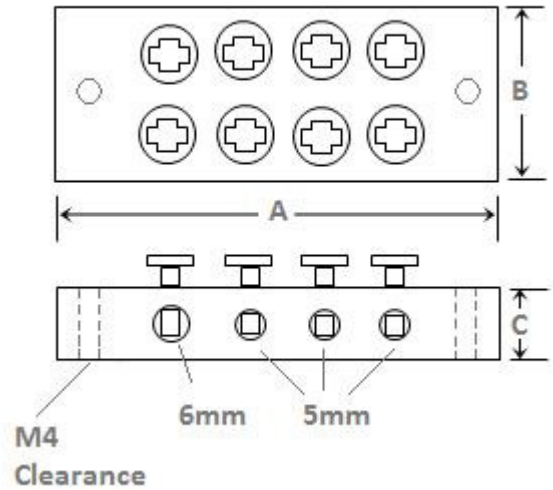
PRODUCT INFORMATION

- **Material: Brass (CuZn39Pb3)**
- **Finish: Self Colour**
- **Screws: Steel Multi-Head**

■ **We have introduced these bars in four sizes for earthing and neutral. The neutral bars come fitted with black moulded supporting feet (two per bar). We carry all four sizes in stock for immediate dispatch.**

Product Code	Earth Bars	Outgoing Ways
AT012/E	No Supports	12
AT024/E	No Supports	24
AT036/E	No Supports	36
AT048/E	No Supports	48
Product Code	Neutral Bars	Outgoing Ways
AT012/N	With Supports	12
AT024/N	With Supports	24
AT036/N	With Supports	36
AT048/N	With Supports	48

DOUBLE POLE EARTH BLOCKS



PRODUCT INFORMATION

- Material: Brass (CuZn39Pb3)
- Finish: Bright Nickel Plate
- Screws: Steel Multi-Head

- The double pole earthing blocks come in 4 and 8 way configurations. We carry stocks of both blocks for immediate dispatch.

ALL MEASUREMENTS IN MILLIMETRES

PRODUCT TABLE

Product Code	No. of Ways	Dimension A	Dimension B	Dimension C
AT005/DP 4-WAY	4	51.0	20.0	12.0
AT006/DP 8-WAY	8	85.0	20.0	12.0

COPPER BUSBAR



Product Code	Bar Dimensions	Pitch	Tapped	Current Rating
AT012/C	12 x 4	18	M5	180A
AT013/C	16 x 6	18	M6	220A
AT014/C	20 x 5	25	M6	280A
AT015/C	25 x 5	25	M6	330A
AT016/C	32 x 5	25	M6	500A

ALL BARS ARE 990mm IN LENGTH

PRODUCT INFORMATION

- ☐ Material: Copper (Cu)
- ☐ Finish: Self Colour

- ☐ Listed above are our standard bars. However, please enquire about any non standard requirements you may have

ALL MEASUREMENTS IN MILLIMETRES

COPPER EARTH AND NEUTRAL LINKS



PRODUCT CODE	DESCRIPTION
ATOM6	6 WAY COPPER EARTH BAR
ATOM8	8 WAY COPPER EARTH BAR
ATOM10	10 WAY COPPER EARTH BAR
ATOM12	12 WAY COPPER EARTH BAR
ATOM14	14 WAY COPPER EARTH BAR
ATOM16	16 WAY COPPER EARTH BAR
ATOM18	18 WAY COPPER EARTH BAR
ATOM20	20 WAY COPPER EARTH BAR
ATOM22	22 WAY COPPER EARTH BAR
ATOM24	24 WAY COPPER EARTH BAR
ATOM26	26 WAY COPPER EARTH BAR
ATOM28	28 WAY COPPER EARTH BAR
ATOM30	30 WAY COPPER EARTH BAR
SINGLE DISCONNECTING LINK	
ATOM6-1	6 WAY COPPER EARTH BAR C/W DISCONNECT LINK
ATOM8-1	8 WAY COPPER EARTH BAR C/W DISCONNECT LINK
ATOM10-1	10 WAY COPPER EARTH BAR C/W DISCONNECT LINK
ATOM12-1	12 WAY COPPER EARTH BAR C/W DISCONNECT LINK
ATOM14-1	14 WAY COPPER EARTH BAR C/W DISCONNECT LINK
ATOM16-1	16 WAY COPPER EARTH BAR C/W DISCONNECT LINK
ATOM18-1	18 WAY COPPER EARTH BAR C/W DISCONNECT LINK

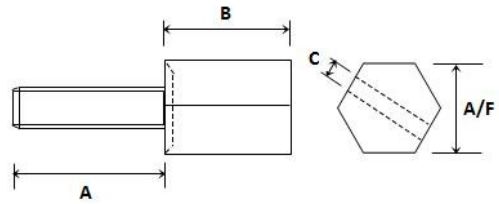
ATOM20-1	20 WAY COPPER EARTH BAR C/W DISCONNECT LINK
ATOM22-1	22 WAY COPPER EARTH BAR C/W DISCONNECT LINK
ATOM26-1	26 WAY COPPER EARTH BAR C/W DISCONNECT LINK
ATOM30-1	30 WAY COPPER EARTH BAR C/W DISCONNECT LINK
	TWIN DISCONNECTING LINK
ATOM6-2	6 WAY COPPER EARTH BAR C/W TWIN DISCONNECT LINK
ATOM8-2	8 WAY COPPER EARTH BAR C/W TWIN DISCONNECT LINK
ATOM10-2	10 WAY COPPER EARTH BAR C/W TWIN DISCONNECT LINK
ATOM12-2	12 WAY COPPER EARTH BAR C/W TWIN DISCONNECT LINK
ATOM14-2	14 WAY COPPER EARTH BAR C/W TWIN DISCONNECT LINK
ATOM16-2	16 WAY COPPER EARTH BAR C/W TWIN DISCONNECT LINK
ATOM18-2	18 WAY COPPER EARTH BAR C/W TWIN DISCONNECT LINK
ATOM20-2	20 WAY COPPER EARTH BAR C/W TWIN DISCONNECT LINK
ATOM22-2	22 WAY COPPER EARTH BAR C/W TWIN DISCONNECT LINK
ATOM24-2	24 WAY COPPER EARTH BAR C/W TWIN DISCONNECT LINK
ATOM26-2	26 WAY COPPER EARTH BAR C/W TWIN DISCONNECT LINK
ATOM28-2	28 WAY COPPER EARTH BAR C/W TWIN DISCONNECT LINK
ATOM30-2	30 WAY COPPER EARTH BAR C/W TWIN DISCONNECT LINK

PRODUCT INFORMATION

- | | |
|---|--|
| <ul style="list-style-type: none"> ■ Material: Copper C101 ■ Finish: Self Colour ■ Fixings: Brass ■ Section: Galvanised | <ul style="list-style-type: none"> ■ Bars are 50 x 6 mm ■ Fixings are M10 x 35 at 35mm centres ■ Board is mounted via GRP insulators onto the galvanised top hat section |
|---|--|

ALL MEASUREMENTS IN MILLIMETRES

NON ROTATING TERMINALS



PRODUCT INFORMATION

- Material: Brass (CZ124)
- Finish: Bright Nickel Plate
- Minimum Order: 100 Pieces
- Free samples available on request

- Listed below are our standard lengths. However, please enquire about any non standard requirements you may have

ALL MEASUREMENTS IN MILLIMETRES

Product Code	Thread	A/F	Dimension A	Dimension B	Dimension C
NRT M4 x 12	M4	6.0	12.0	5.0	2.5
NRT M4 x 16	M4	6.0	16.0	5.0	2.5
NRT M4 x 20	M4	6.0	20.0	5.0	2.5
NRT M5 x 16	M5	8.0	16.0	7.0	3.5
NRT M5 x 24	M5	8.0	24.0	7.0	3.5
NRT M6 x 24	M6	10.0	24.0	10.0	5.0
NRT M6 x 30	M6	10.0	30.0	10.0	5.0
NRT M8 x 34	M8	13.0	34.0	14.0	6.5
NRT M10 x 44	M10	15.0	44.0	17.0	7.5
NRT M12 x 50	M12	19.0	50.0	20.0	9.5